

Drammens Teater

General info Main Stage

- Parking:** 30 meters parking spot for trucks/vans located alongside the venue load-in, in Øvre Storgate 12. Parking is only permitted on the right side of the street in marked up places. Permits will be issued by the venue representative. A 3 phase 32A (400V) is available on request.
- Load in:** Load in is at street level next to the parking space with lift access from the sidewalk to the stage.
- Entrance crew/artists:** Stage Entrance A, next to load in with staircase access to dressing rooms. A door access code will be given to the travel party upon arrival.
- Wifi:** Network: Drammens Teater, gjest
Log-in: open
- Dressing rooms:** 2nd floor, located directly above the stage
2 dressing rooms 5mx3m with 4 mirror stations each.
1 green room, 6mx3m
A common area with a coffee machine, dish washer, fridge, sink with tap water and dining tables for 12-16 people is located right outside the dressing rooms.
5mx3,5m with 2 showers and toilets.
- 3rd floor:
4 dressing rooms, with 29 mirror stations all together
- dB Limit:** To ensure a healthy concert experience for our audience, and to comply with EU noise regulations towards our employees, we are enforcing a 103dB (A) averaged over 15 minutes dB limit (Leq 15 = 103dB(A)) and a 99 dB (A) averaged over 30 minutes (Leq 30 dB(A)). We do not use a peak limiter or circuit breaker to enforce the rule.
- Fire and pyro:** Approved permit from the local Fire Department and Drammens Teater must be applied to the risk management document before get-in.
- Smoking:** Drammens Teater is a smoke free building and according to national laws, smoking is prohibited in all public areas including the stage and dressing rooms. An outside smoking area is located in the backyard of the theatre.
- Smoke/haze:** Our venues are enviromentally certified. We encourage artists to minimize the use of theatrical smoke and haze. However, if smoke/fog or

Updated: 13.11.2025

strokes is being used, we would like to receive a notification in advance, in order to inform the audience. If there are children on stage, we strongly recommend NO use of smoke/haze.

Contact:

Petter Sæterøy - Sound Engineer / Technical Advance
petter@drammenscener.no

Guro Kristoffersen – Advancing
guro@drammenscener.no

Hanne Falch – Producer
hanne@drammenscener.no

Drammens Teater

Sound Equipment Main Stage

FOH:	1	X	DigiCo SD7 Quantum with theatre software
Stage Rack:	1	X	DigiCO SD rack, in 56 + 8 tube pre amps / out 24.
	6	X	Cat6 between stage and FOH
Additional IO:	1	X	Trafo split 3 way, Harting / Siemens / XLR
Main Speaker System:	8	X	d&b Q1
	2	X	d&b Q7
SUB	12	X	d&b Q-SUB
InFill	2	X	d&b Q7
Front Fill:	2	X	d&b E3
Center Balcony	3	X	d&b Q1
	2	X	d&b Q7
Bacony fill	2	X	d&b E3
Amplification:	5	X	d&b 40D
	1	X	d&b 5D
Monitors:			
Wedges:	14	X	d&b M4
Amplification:	4	X	d&b D12
Microphones:	2	X	Shure Beta 91a
	1	X	Shure Beta 91
	2	X	Shure Beta 52
	4	X	Shure SM 58
	4	X	Shure Beta 58
	1	X	Shure KSM 9
	8	X	Shure SM 57
	2	X	Shure Beta 57
	2	X	Shure KSM 109
	4	X	Shure Beta 98 AMP
	1	X	Sennheiser MD 421
	2	X	Sennheiser MD 441
	2	X	Neumann KSM 105
	4	X	Neumann KM 184
	10		

4	X	Audio Technica ATM 350
1	X	Audio Technica AT 4040
	X	Audio Technica AE 2500

DI's:

4	X	Radial Pro 48 Active DI
6	X	Radial ProDI Passive DI
2	X	Radial ProD2 Passive Stereo DI
2	X	Radial Pro AV2 Passive Stereo DI
1	X	DI Radial USB PRO
6	X	LA Audio Active DI

**Frequencies allowed
for wireless
microphones:**

510 – 518 MHz (K 26)
614 – 622 MHz (K 39)
670 – 686 MHz (K 46-47)
738 – 753 MHz (K – SDL)

Secondary frequency range: 494-694 MHz and 733-758 MHz
with maximum permitted radiated power of 50mW e.r.p.

The conditions for use of these secondary frequency bands are
that the use does not disturb primary users of the band

DB Limit:

To ensure a healthy concert experience for our audience, and to
comply with EU noise regulations towards our employees, we
are enforcing a 103dB (A) averaged over 15 minutes dB limit
(Leq 15 = 103dB(A)) and a 99 dB (A) averaged over 30 minutes
(Leq 30 dB(A)). We do not use a peak limiter or circuit breaker to
enforce the rule.

Contact:

Petter Sæterøy - Technical Advance
petter@drammenscener.no

Updated: 13.11.2025

Drammens Teater

Sound Equipment (Extended)

Please contact us if you wish to use any of the following equipment, as it is not part of our standard deal, and/or needs to be transported or set up.

Monitor Mix:	1	X	DigiCO SD9 / Avid- Digidesign Venue Profile
Additional Wedges:	4	X	d&b M4
Drum Fill:	2	X	d&b Q-SUB
	1	X	d&b M4
Amplification:	1	X	d&b D12
Wireless:	8	X	Shure AD4 Q A 470-636 MHz (32 ch. total)
	1	X	Shure AD4 D A 470-636 MHz (2 ch. total)
	34	X	Shure AD1 G56 470-636 MHz Bodypacks
	8	X	Shure AD2 G56 470-636 MHz Handheld
	8	X	Shure Beta 58 Capsule for Wireless
	8	X	Shure SM58 Capsule for Wireless
	2	X	Shure KSM 9 Capsule for Wireless
	16	X	DPA 6066 Headset microphones
	24	X	DPA 4061 Lavalier microphones
In-Ear System:	8	X	Sennheiser EW 300 IEM G3 626-668 MHz (B)

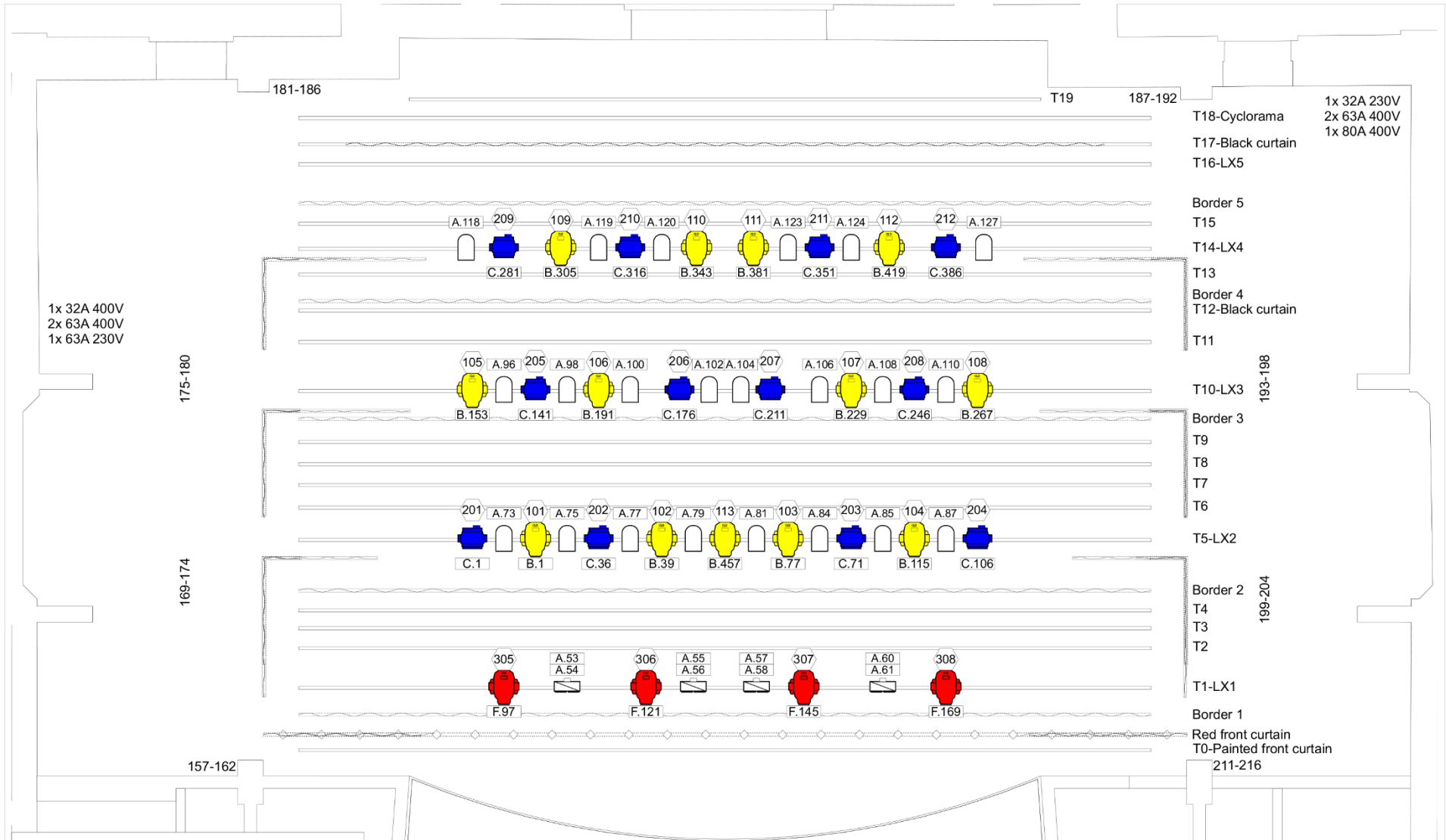
Drammens Teater

Lighting Equipment Main Stage

Desk:	1	X	GrandMA 3 Light
DMX Universes:	6	X	4 used for house rig, 2 empty universes on stage
Dimmers:	220	X	ETC Sensor + 3kW pr channel
Automated Lights:	13	X	Martin Mac Encore Performance CLD
	12	X	Clay Paky K25 B-eye
	8	X	Martin Mac Encore Wash CLD (front light)
Generic Front Lights:	7	X	Selecon Pacific 7,5°-19°
	11	X	Selecon Pacific 25°-50°
	14	X	Strand SL 15°-32°
	6	X	ETC S4jr 25°-50°
	4	X	ETC Source4 Series 2 Lustr+
Generic Stage Lights:	22	X	Par64 CP62 (one per channel)
	4	X	4lights (two channels per fixture)
Atmospheric:	1	X	MDG atmosphere APS, controlled from stage
	1	X	Antari Z-3000 II
Extra available fixtures by prior agreement only:	12	X	Floorcans CP62
	8	X	ETC ColorSource PAR on floorstands
	2	X	8lights
	2	X	Martin Atomic 3000
	1	X	ShowLED Classic star backdrop (extra charge)
	2	X	Robert Juliat MANON follow spots* (extra charge)
			*Must be booked at contract signing for reservation of seating in the audience area.

Smoke / Haze: Our venues are enviromentally certified. We encourage artists to minimize the use of theatrical smoke and haze. However, if smoke/fog or strobes is being used, we would like to recieve a notification in advance, in order to inform the audience. If there are children on stage, we strongly recommend NO use of smoke/haze.

Contact: Petter Sæterøy - Technical Advance
petter@drammenscener.no



181-186

T19

187-192

T18-Cyclorama 1x 32A 230V
2x 63A 400V
1x 80A 400V

T17-Black curtain

T16-LX5

Border 5

T15

T14-LX4

T13

Border 4

T12-Black curtain

T11

193-198

T10-LX3

Border 3

T9

T8

T7

T6

T5-LX2

199-204

Border 2

T4

T3

T2

T1-LX1

Border 1

Red front curtain

T0-Painted front curtain






211-216

1x 32A 400V
2x 63A 400V
1x 63A 230V

175-180

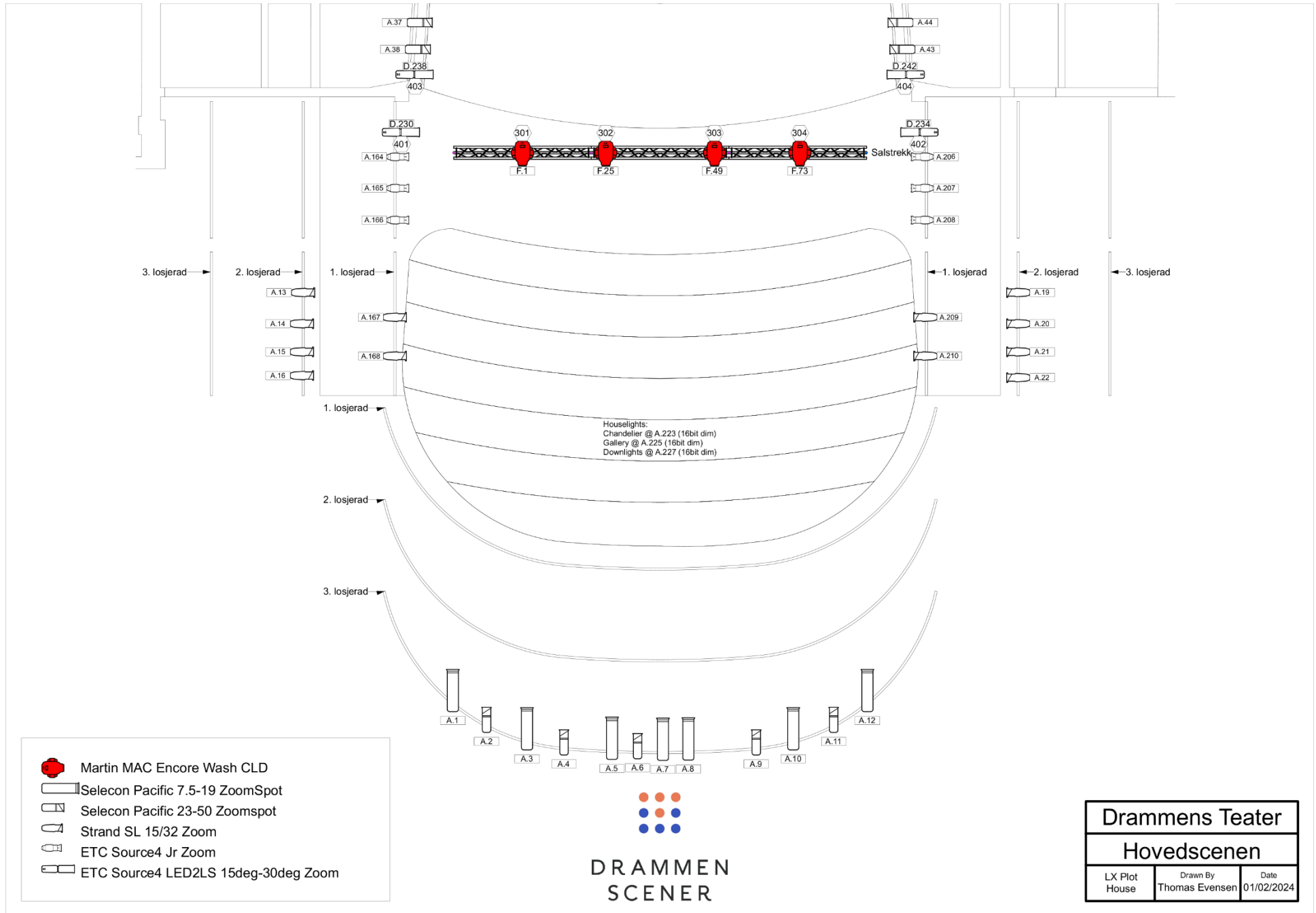
169-174

157-162

-  Clay Paky ALEDA B-EYE K25 shapes
-  Martin MAC Encore Performance CLD
-  Martin MAC Encore Wash CLD
-  PAR64 CP62
-  Showtec Stage Blinder 4



Drammens Teater		
Hovedscenen		
LX Plot Stage	Drawn By Thomas Evensen	Date 01/02/2024



Drammens Teater

AV Equipment Main Stage

Projector:	1	X	Panasonic RZ970 WUXGA Brightness: 10.000 center lumens Resolution: 1920x1200 Aspect Ratio: 16:10
Lens:	1	X	ET-DLE 170 standard lens
Screen:	1	X	7x4 meters fixed frame
Monitor Displays:	1	X	42'' with fixed tilted floor stand
Connections:			HDMI at downstage Right/Left or FOH

Drammens Teater

Stage and rigging Main Stage

Stage:	<p>Depth: 11m Width: 13m Proscenium height: 6,5m Proscenium opening: 8,84m Height to ceiling: 14m The stage floor is pine tree painted black.</p>
Curtains:	<p>1x backdrop w/ split of black velvet 3x pair of legs of black velvet 5x borders of black velvet</p> <p>1x center curtain of black velvet. Manually split or automated hoist operated from control desk at stage left. 1x front curtain of red velvet. Manually split. Operated from stage right.</p> <p>All curtains are certified fire resistant. Any backdrops that are to be hung must be certified fire resistant. Please send this in advance or bring to venue manager at latest on arrival.</p>
Hanging points:	<p>There are 21 pipe battens individually operated by a motorized automated fly system. 19 of these are above the stage and 2 are above the audience for front lights. Battens no 1 and 2 (audience) has a weight limit of 450 kg (PQ) and 100 kg pr point (PL). Battens no 3-19 (above stage) has a weight limit of 300 kg (PQ) and 100 kg pr point (PL). The stage automation is only to be operated by authorized personnel.</p>
Power:	<p>2x triple phase 63A 400V upstage right and left 1x triple phase 32A 400V upstage right and left 2x triple phase 63A 230V upstage right 1x triple phase 32A 230V upstage right 8x single phase 16A 230V located around the stage for backline</p>
Contact	<p>Petter Sæterøy - Technical Advance petter@drammenscener.no</p>

